

HONDA 50

MODEL QA50

**OWNER'S
MANUAL**

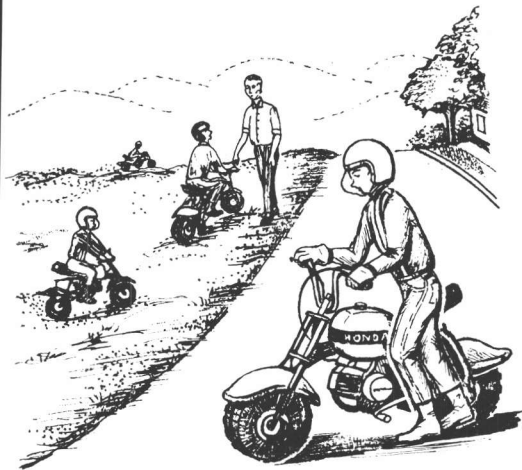
■ READ OWNER'S MANUAL CAREFULLY :

THIS VEHICLE WAS MANUFACTURED FOR OFF-THE-ROAD USE ONLY. DO NOT OPERATE ON PUBLIC STREETS, ROADS, OR HIGHWAYS.

Message to Mom & Dad:

Most Honda Mini-Trails will be operated by junior riders. In many instances, this is their initial introduction to the sport of motorcycling. Before your sons or daughters start to ride, it is important that you review the contents of this manual with them. A preliminary understanding of proper operation and maintenance will facilitate training and will contribute to their safety and the service life of the machine.

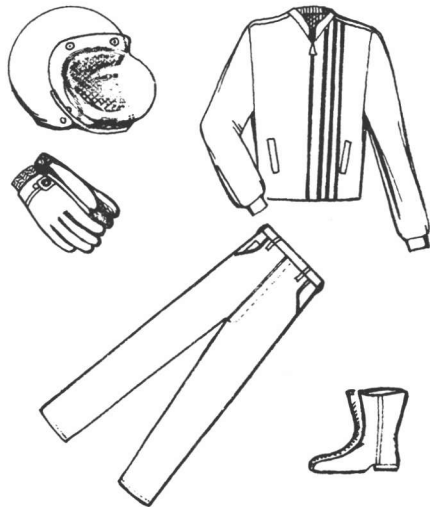
The Honda QA-50 is designed and equipped for off-the-road use only and should not be operated on public streets. A mini-bike is less visible to traffic than larger machines. If the rider must cross a street to reach his riding area, then for safety and to comply with laws in many states, he should shut off the engine and walk the mini-bike across. When training your son or daughter, select a safe practice area with an even surface, free of obstacles.



The rider should wear protective clothing. The most important item is a good safety helmet. Eye protection is also necessary ...safety glasses, goggles, or a plastic face shield attached to the helmet. Clothing should protect the body as much as possible, and the rider should wear gloves and boots or sturdy shoes.

RESPECT PRIVATE PROPERTY. THE RIDER SHOULD NEVER CUT ACROSS RESIDENTIAL YARDS OR USE PRIVATE PROPERTY WITHOUT PERMISSION.

NOISE IS A NUISANCE TO YOUR NEIGHBORS. DO NOT ALTER OR REMOVE THE MUFFLER.



//////////////////////**FOREWORD**////////////////////////////////////

It is with great pleasure that we welcome you as a new owner of the HONDA Mini-Bike. Further, we wish to thank you for selecting a HONDA product.

This mini-bike features a quiet engine and a light weight construction, and has been designed for easy handling. It is not designed, equipped, or approved for operation on public highways or roads.

This Owner's Manual is a guide for the proper operation and servicing of your

Mini-Bike. Read it thoroughly so that you will be able to maintain your Mini-Bike in the best of condition for the utmost in riding pleasure.

Your HONDA dealer will provide you with complete periodic inspection and furthermore, he is always happy to give you assistance in case you have any problem. We wish you many miles of safe and happy riding.

CONTENTS

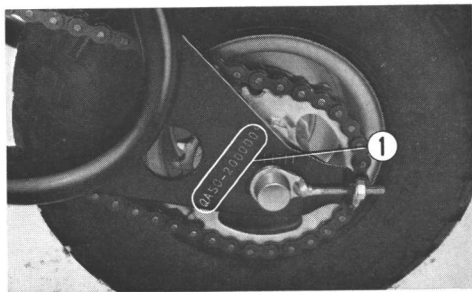
| | |
|-------------------------------------|----|
| SERIAL NUMBER LOCATION | 4 |
| CONTROL LOCATIONS | 5 |
| OPERATING INSTRUCTIONS | 8 |
| Engine stop switch | 8 |
| Front brake lever | 8 |
| Rear brake lever | 9 |
| Gear change pedal | 9 |
| Choke lever | 10 |
| FUEL AND OIL | 11 |
| Fuel tank | 11 |
| Fuel valve | 11 |
| Engine Oil Recommendation | 12 |
| Viscosity | 12 |
| PRE-RIDING INSPECTION | 13 |
| STARTING ENGINE | 13 |
| RIDING TIPS | 14 |
| CARRYING TIPS | 15 |

| | |
|--------------------------------|----|
| MAINTENANCE | 15 |
| MAINTENANCE SCHEDULE | 16 |
| MAINTENANCE OPERATIONS | 18 |
| Engine Oil Replenishment | 18 |
| Engine Oil Change | 18 |
| Spark Plug | 20 |
| Ignition Timing | 21 |
| Valve Tappet Clearance | 22 |
| Air Cleaner | 24 |
| Throttle Grip Play | 25 |
| Carburetor | 25 |
| Clutch | 27 |
| Drive Chain | 28 |
| Front Brake | 30 |
| Rear Brake | 31 |
| Front Wheel Removal | 32 |
| Rear Wheel Removal | 33 |
| TOOL KIT | 34 |
| SPECIFICATIONS | 35 |
| WIRING DIAGRAM | 37 |

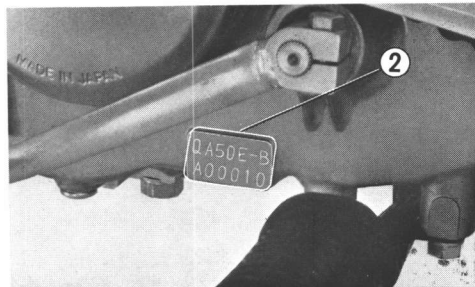
//////////////////////SERIAL NUMBER LOCATION////////////////////////////////////

The frame No. ① is stamped on the left side of the rear wheel axle bracket.
The engine No. ② is located on the left side of the engine at the bottom

These serial numbers are required for applying for warranty claims or ordering parts, the frame No. should be stated to assure receiving the proper parts.



① Frame serial number



② Engine serial number